

Continuing Medical Education  
**The Cooper Health System**  
One Cooper Plaza  
Camden, New Jersey 08103-1489

World Class Care. Right Here. Right Now.

**George E. Norcross, III**  
Chairman, Board of Trustees

**Adrienne Kirby, PhD**  
President and CEO  
The Cooper Health System

Non-Profit  
Organization  
US Postage  
**PAID**  
Permit No. 1565  
Bellmawr, NJ

**MELANOMA:  
From Screening to Revolutionary  
New Therapies**

**Wednesday, June 3, 2015  
5:00 PM - 8:10 PM  
The Westin  
Mount Laurel, NJ**

# MELANOMA: From Screening to Revolutionary New Therapies

**Wednesday, June 3, 2015**

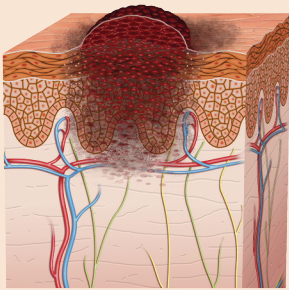
**5:00 PM - 8:10 PM**

The Westin  
Mount Laurel, NJ

**CO-SPONSORED BY:**



**CONTINUING MEDICAL EDUCATION**

**Activity Director and Moderator:****Nati Lerman, MD**

Division of Hematology and Medical Oncology  
MD Anderson Cancer Center at Cooper  
Cooper University Health Care  
Assistant Professor of Medicine  
Cooper Medical School of Rowan University  
Camden, NJ

**Additional Faculty:****Arnold M. Baskies, MD, FACS**

Chief Science Officer, National Board of Directors  
Chairman, Mission Outcomes Committee  
American Cancer Society  
Clinical Professor, Jefferson School of Nursing  
Chairman, NJ Governor's Task Force on Cancer Prevention, Early Detection & Treatment  
Surgical Oncologist and Medical Director, Virtua  
Past Chair, Committee on Education  
Cancer Accreditation Surveyor  
Commission on Cancer  
American College of Surgeons

**Michael A. Davies, MD, PhD**

Associate Professor  
Department of Melanoma Medical Oncology  
Department of Systems Biology  
Division of Cancer Medicine  
The University of Texas MD Anderson Cancer Center  
Houston, TX

**Naomi Lawrence, MD**

Head, Procedural Dermatology  
Dermatologic Surgery  
Cooper University Health Care  
Professor of Medicine  
Cooper Medical School of Rowan University  
Camden, NJ

**Lacy Sommer, MD**

Chief Resident  
Division of Dermatology  
Skin Cancer Center  
Cooper University Health Care  
Camden, NJ

**Francis R. Spitz, MD, FACS**

Head, Division of General Surgery  
Vice Chief, Department of Surgery  
Deputy Director, MD Anderson Cancer Center at Cooper  
Cooper University Health Care  
Professor of Surgery  
Cooper Medical School of Rowan University  
Camden, NJ

**Need More Information?***Please contact:*

Continuing Medical Education  
The Cooper Health System  
Three Executive Campus, Suite 240  
Route 70 & Cuthbert Blvd.  
Cherry Hill, NJ 08002  
Tel: (856) 382-6480  
Fax: (856) 382-6495  
E-mail: CME@cooperhealth.edu

# MELANOMA: From Screening to Revolutionary New Therapies

**Wednesday, June 3, 2015***Moderator: Nati Lerman, MD*

- 5:00 PM – 5:30 PM **Registration/Buffer Dinner**
- 5:30 PM – 5:35 PM **Welcome and Introductions**  
*Nati Lerman, MD*
- 5:35 PM – 6:30 PM **The Rapidly Evolving Landscape of Systemic Therapies for Advanced Melanoma: Achievements, Challenges, and Opportunities**  
*Michael A. Davies, MD, PhD*
- 6:30 PM – 6:40 PM **Choose Your Cover: A Successful Community-based Skin Cancer Screening Program**  
*Arnold M. Baskies, MD, FACS*
- 6:40 PM – 6:55 PM **Diagnosis of Melanoma: The Role of the Dermatologist**  
*Lacy Sommer, MD*
- 6:55 PM – 7:05 PM **BREAK**
- 7:05 PM – 7:20 PM **Mohs Surgery in the Management of In-situ Melanoma**  
*Naomi Lawrence, MD*
- 7:20 PM – 7:40 PM **The Surgical Management of Melanoma**  
*Francis R. Spitz, MD, FACS*
- 7:40 PM – 8:10 PM **Panel Discussion/Question and Answer Period**  
*All Faculty*

**Intended Audience:**

The intended audience for this conference includes primary care physicians and specialists in hematology, medical oncology, dermatology, and dermatologic surgery. Residents, fellows, medical students, physician assistants, advanced practice nurses, oncology nurses, community health professionals, advocates, and other physicians with an educational need or interest in this topic may also attend.

**Overall Learner Objective:**

Understand the spectrum of management of melanoma from screening to advanced medical and surgical techniques and treatments.

## MELANOMA: From Screening to Revolutionary New Therapies

**Wednesday, June 3, 2015 • 5:00 PM - 8:10 PM**

The Westin

555 Fellowship Road, Mount Laurel, NJ 08054



Dept. of CME phone: (856) 382-6480

**Preregistration Deadline: May 27, 2015**Preregistration is REQUIRED for this **FREE** CME activity.

Pursuant to the Physician Self-Referral Law (Stark Law), Cooper is limited in the amount of nonmonetary compensation that it may provide to physicians. To ensure that it meets these regulatory limitations, Cooper documents the monetary value of your participation in each Cooper CME activity. If the monetary value provided to you would exceed these regulatory limits, you must pay to participate in the additional CME. Should you have any questions or wish to discuss this further, please contact Cooper's Compliance Department at (856) 536-1309. Thank you for your interest in the CME opportunities.

Space is limited, so registrations will be accepted on a first-come, first-served basis.

**No walk-in registrations please.****Mail registration to:**

Continuing Medical Education  
The Cooper Health System  
Three Executive Campus, Suite 240  
Route 70 & Cuthbert Blvd.  
Cherry Hill, NJ 08002

**Or fax registration form to:** (856) 382-6495

**Or e-mail ALL of the registration information requested below to:**  
CME@cooperhealth.edu

**Or register on-line:** [events.cooperhealth.org](http://events.cooperhealth.org) *Click on Continuing Medical Education on the left side.***No registrations by telephone will be accepted.**

A notice will be sent to you to confirm your registration.

Please print

Name & Degree: \_\_\_\_\_  
First Last Degree

Please check the status of your medical license:  MD/DO - Active  MD/DO - RetiredPlease check if you are a  resident or  fellow.

Address: \_\_\_\_\_

City/State/Zip: \_\_\_\_\_

Telephone:  Home \_\_\_\_\_ Fax: \_\_\_\_\_  
 Work \_\_\_\_\_  
 Mobile \_\_\_\_\_

E-mail (required): \_\_\_\_\_

Company Name: \_\_\_\_\_

City/State: \_\_\_\_\_

Specialty/Occupation: \_\_\_\_\_

If you require assistance with hearing, vision, or mobility to make this activity accessible to you, please check here and return by May 20, 2015. You may also contact us if you have special meal requirements. We will contact you at the phone number you provide above.

**Cancellation Policy:** The Cooper Health System reserves the right to cancel this conference due to insufficient enrollment or other unforeseen circumstances.

**Please Note:** If you are unable to attend after registering, please contact us as soon as possible at (856) 382-6480.

**Accreditation/Designation/Disclosure:**

The Cooper Health System is accredited by the Accreditation Council for Continuing Medical Education to provide continuing medical education for physicians. The Cooper Health System takes responsibility for the content, quality, and scientific integrity of this CME activity.

The Cooper Health System designates this live activity for a maximum of **2.5 AMA PRA Category 1 Credits™**. Physicians should claim only the credit commensurate with the extent of their participation in the activity.

Successful completion of one hour of a continuing medical education (CME) course recognized by the American Medical Association, the American Osteopathic Association, or the American Podiatric Medical Association is equal to one hour of continuing education for New Jersey nursing license renewal (New Jersey Board of Nursing 13:37-5.3).

All faculty participating in continuing medical education activities sponsored by The Cooper Health System are expected to disclose to the audience any real or apparent conflict of interest related to the content of their presentation.